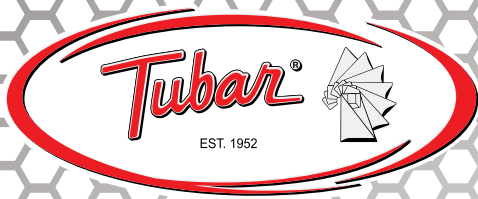




TABLE OF CONTENTS

3-4.....	TC Dumper
5-6	TCLS Dumper
7-8	TCHD Dumper
9-10.....	TCHDLS Dumper
11-12	TD Dumper
13-14	TDLS Dumper
15-16	TDHD Dumper
17-18	TDHDLS Dumper
19-20	THD Dumper
21-22	High Dump Slant Mast
23-24	Food Grade Dumper
25	Hydraulic Shop Cranes
26	Stackers
27-28	VRC (Vertical Reciprocating Conveyor)
29-38	Bulk Bag Systems
39-40	Custom Equipment
41	Hydraulic Power Units
42	Hydraulic Cylinders
43	Warranty



Company History

Tubar

Kenneth L. Cook started Uhrden, Inc. in August of 1952 in a two car garage in Dennison, Ohio with the dream of becoming the best material handling equipment manufacturer in the industry with the upper-most levels of quality manufacturing and customer service.

The company began designing and selling shop cranes and hand trucks made of “tubing” and “bar” stock. From that, came the name **Tubar**®.

In 1955, while attending a Material Handling Equipment Expo in Chicago, Kenneth was asked if he could design a piece of hydraulic equipment to dump parts onto a sorting table from a 55 gallon drum for one of the big three auto companies. That would turn out to be Tubar Dumper Order #1 and the TD-style dumper was born. From this first dumper, Uhrden/Tubar expanded into various types of material handling equipment for food, chemical, pharmaceutical and manufacturing, as well as the U.S. Postal and military services.

In July of 1964, Uhrden/Tubar moved to it's new 100,000 sq/ft location in Sugarcreek, Ohio and has continued to grow and expand over the years to become the international company it is today; an industry leader in dumpers and material-handling equipment.

In 2012, Tubar merged with The Eureka Machine Company and the name Uhrden was dropped to create **The Tubar Eureka Industrial Group**.

Eureka Machine Shop

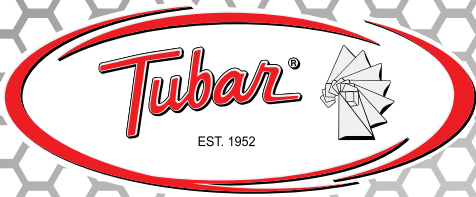
With a humble beginning as a blacksmith shop in 1898, Eureka Machine Shop quickly gained a reputation for their quality, ingenuity and their attention to detail.

In 1924, to meet the rising demand for their services, a new, modernized steam-operated facility was built. In order to continue serving their customers while building the new facility, it was built over and around the existing, old, wood machine shop. Once the new structure was completed, the old, wood structure was torn down and removed through the front door of the new shop.

With the new shop in full operation, they expanded production and fabrication capabilities and over the years have fabricated everything from fire trucks to repairing the local farmer's plow.

Today, Eureka Machine Shop utilizes the latest in CNC technologies, along with the tried and true machining techniques of years past, to manufacture complex and at time unique pieces, that are shipped and used all over the world.

At Eureka Machine Shop, we feel that our extensive history and success lies in the success and satisfaction of our customers.

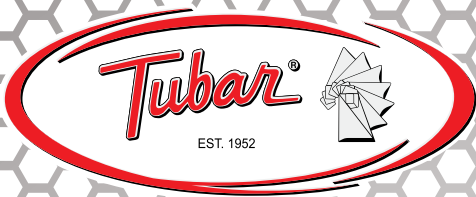


Mission Statement & Quality Policy Statement

The Tubar / Eureka Industrial Group is dedicated to providing the highest quality products and service by continuing our commitment and dedication to the improvement of our quality program while meeting and exceeding our customers' needs & expectations.

We are committed to improving and expanding our product lines through technological innovation, creativity and product development.

This dedication is further represented in our relationship with our distributors, their customers and our continuing goal of market expansion throughout the world.



TC Series Dumpers



Tubar TC Series Heavy-Duty Dumpers

Twin Cylinder Dumpers custom designed for the big jobs. Capacities through 12,000 lbs. Dump heights up to 60". Units can be equipped with a riser to increase dump height over 60". Built to specifications to handle all kinds of containers – boxes, drums, parts bins, in-process containers. Electric control starts or stops hydraulic power at any point in dumping cycle. Overload factors are greatly in excess of job requirements. Smooth hydraulic cycling reduces damage to critical materials by providing gentle slide of contents. Eliminates hazards of uncontrolled or manual dumping.

Whether your handling job requires a single dumper or a complete system we can design and manufacture equipment suited to your needs so you can cut costs and increase profits.

The Tubar/Eureka Industrial Group.
American Made. Brickyard Tough.



TC Series Dumpers

Tubar TC Series Heavy-Duty Dumpers

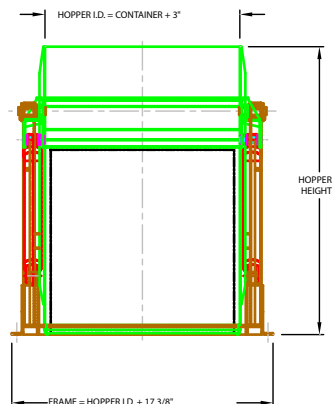
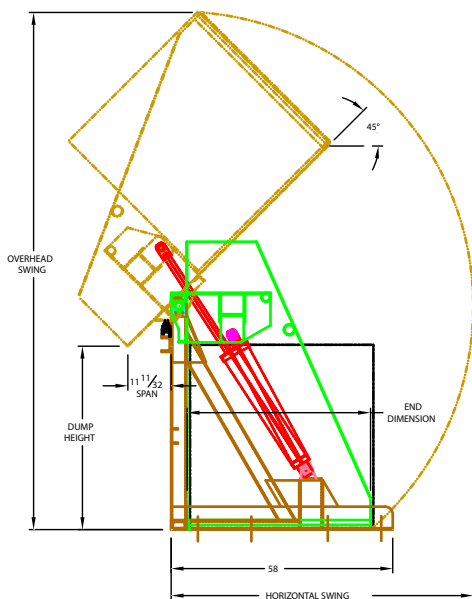
Tubar TC Dumpers can be specifically engineered and constructed to meet your exact needs. Twin Cylinders Dumpers are custom designed with capacities through 12, 000 lbs. and height to 60".

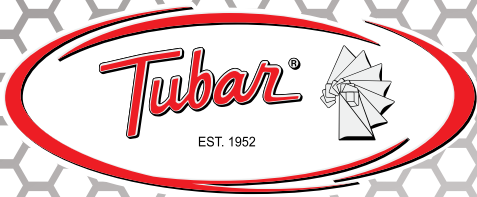
Dump Height	36"					42"				
End Dimensions	36"	42"	48"	54"	60"	36"	42"	48"	54"	60"
Overhead Swing	108"	111"	115"	120"	125"	118"	121"	126"	130"	134"
Horizontal Swing	63"	67"	71"	75"	80"	68"	71"	75"	79"	84"
Hopper Height	64"					70"				

Dump Height	48"					54"				
End Dimensions	36"	42"	48"	54"	60"	36"	42"	48"	54"	60"
Overhead Swing	128"	132"	136"	140"	144"	138"	142"	146"	150"	155"
Horizontal Swing	73"	76"	80"	84"	88"	78"	81"	84"	88"	92"
Hopper Height	76"					82"				

Dump Height	60"				
End Dimensions	36"	42"	48"	54"	60"
Overhead Swing	149"	152"	156"	161"	165"
Horizontal Swing	83"	86"	89"	93"	96"
Hopper Height	88"				

Model Number = TC - End Dimension - Dump Height - Dump Angle - Capacity - Stat or Port
 (Example: TC-48"-48"45°-2000#-Stat)





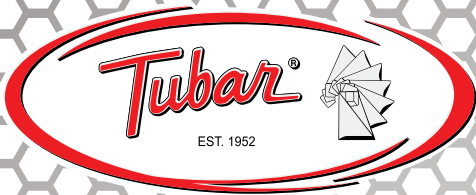
TCLS Series Dumpers



Twin Cylinder Lift & Seal

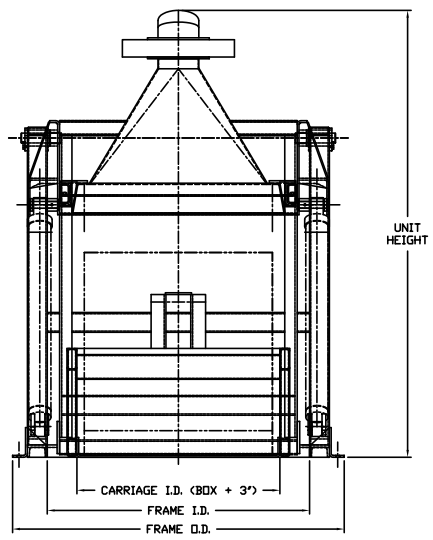
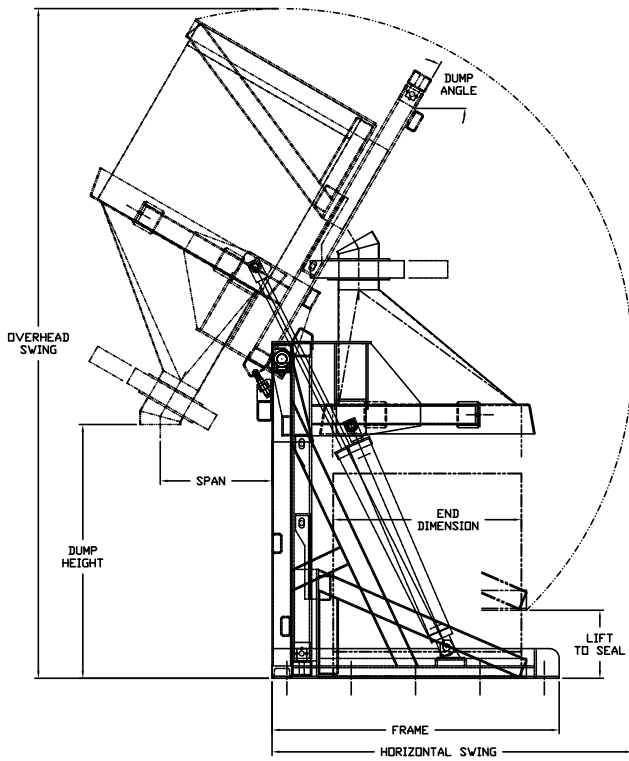
Twin Cylinder Lift & Seal Dumpers are custom designed for any job, big or small. Capacities through 12,000 lbs. and dump heights up to 60". Units can be equipped with a riser to increase dump height over 60". Built to specifications to handle all kinds of containers, boxes, drums, parts bins, and in-process containers. Electric control starts or stops hydraulic power at any point in the dumping cycle. Overload factors are in excess of job requirements. Smooth hydraulic cycling reduces damage to critical materials by providing gentle slide of contents, eliminating hazards of uncontrolled or manual dumping. This unit is supplied with a moveable carriage that lifts the box or container into a sheet metal hood, with or without a discharge valve, before dumping. This option is used for dust control and better control of product discharge.

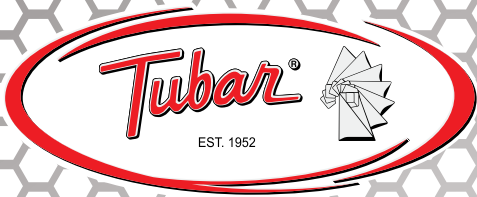
The Tubar/Eureka Industrial Group.
American Made. Brickyard Tough.



TCLS Series Dumpers

Twin Cylinder Lift & Seal





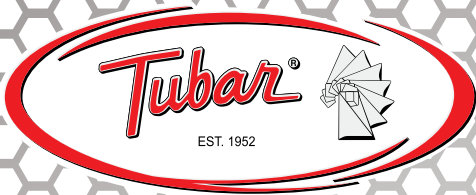
TCHD Series Dumpers



Twin Cylinder High Dump

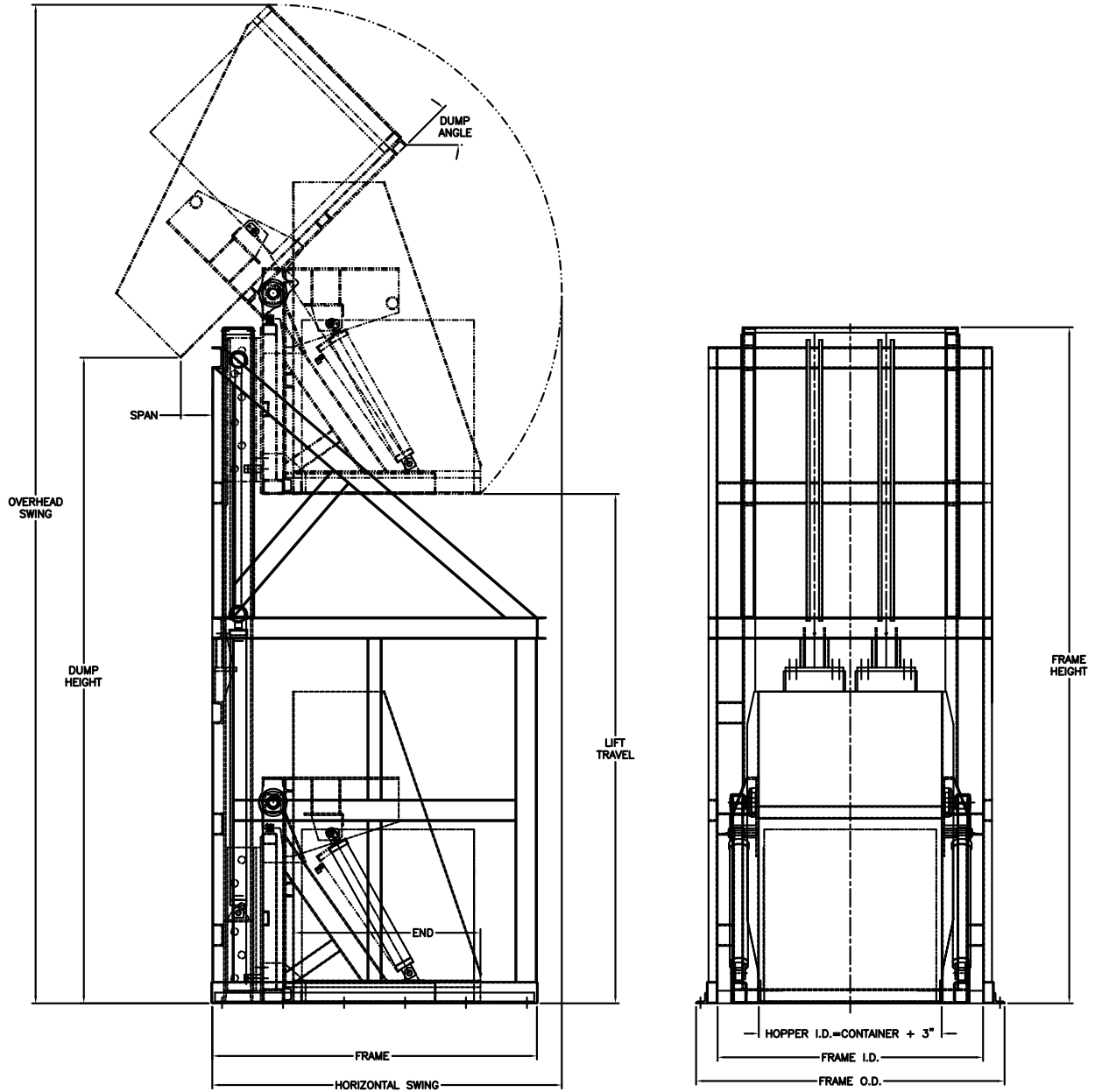
Twin Cylinder High Dump Dumpers are custom designed for any job, big or small. Capacities through 12,000 lbs. and dump heights up to 40 ft. Built to specifications to handle all kinds of containers, boxes, drums, parts bins, and in-process containers. Electric control starts or stops hydraulic power at any point in the dumping cycle. Overload factors are in excess of job requirements. Smooth hydraulic cycling reduces damage to critical materials by providing gentle slide of contents, eliminating hazards of uncontrolled or manual dumping. These units can be stationary or portable.

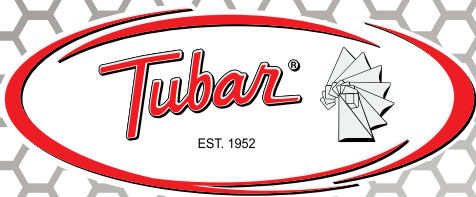
The Tubar/Eureka Industrial Group.
American Made. Brickyard Tough.



TCHD Series Dumpers

Twin Cylinder High Dump





TCHDLS Series Dumpers

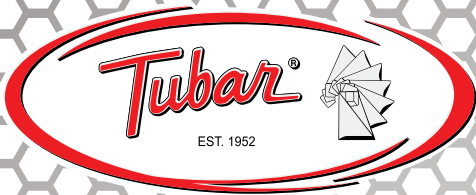


Twin Cylinder High Dump Lift & Seal

Twin Cylinder High Dump Lift & Seal Dumpers are custom-designed for any job, big or small with capacities up to 12,000 lbs. and dump heights up to 40 ft. up to 180 degree rotation. Built to specifications to handle all kinds of containers, boxes, drums, parts bins and in-process containers. Electric control starts or stops hydraulic power at any point in the dumping cycle. Overload factors are in excess of job requirements. Smooth, hydraulic cycling reduces damage to critical materials by providing gentle slide of contents, eliminating hazards of uncontrolled or manual dumping.

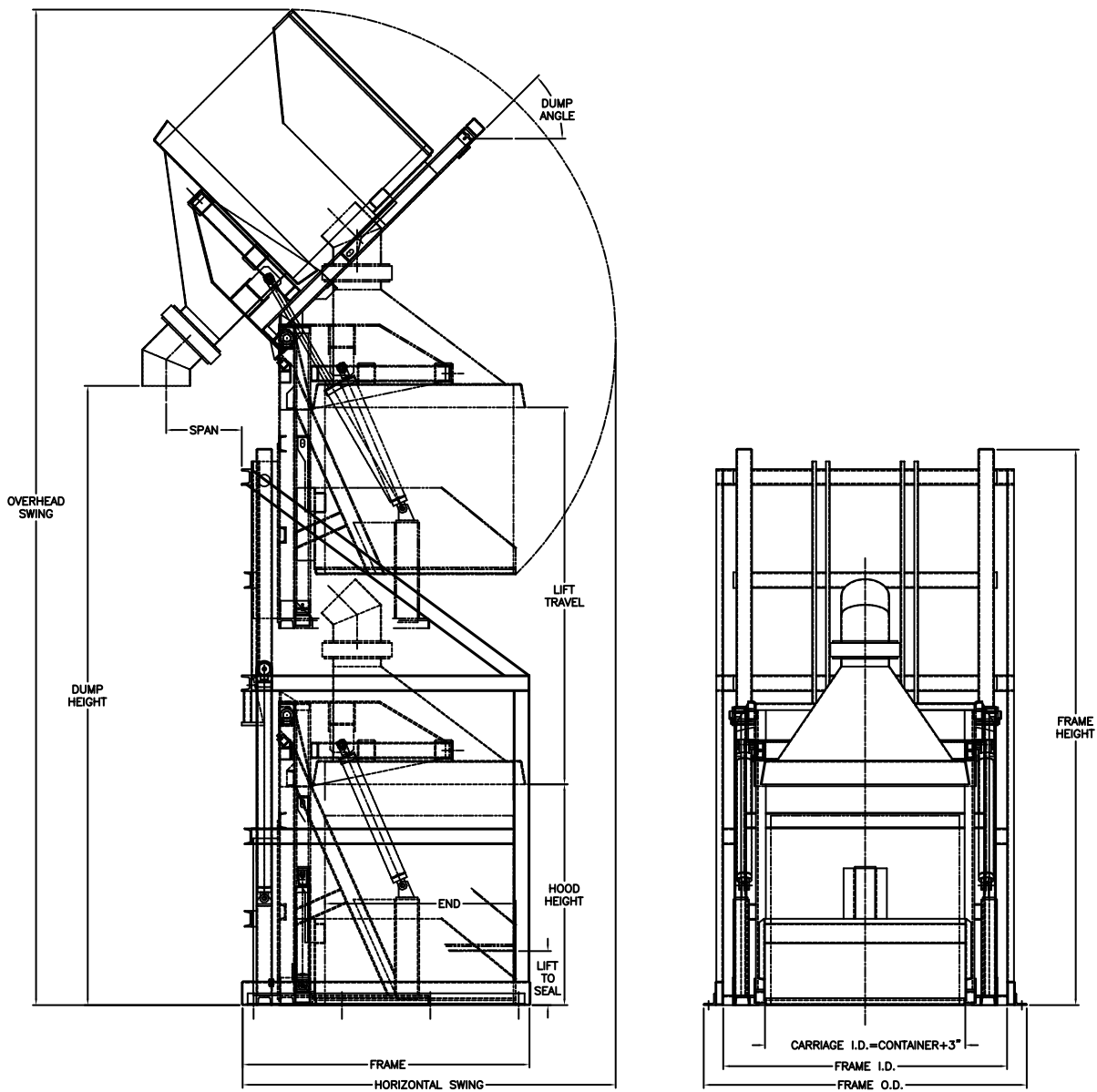
This unit is supplied with a moveable carriage that lifts the box or container into a sheet metal hood, with or without a discharge valve, before dumping. This option is used for dust control and better control of product discharge.

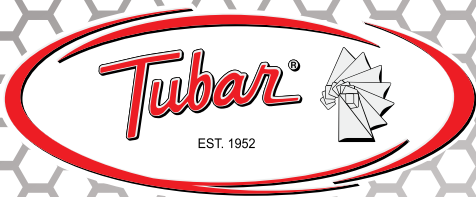
**The Tubar/Eureka Industrial Group.
American Made. Brickyard Tough.**



TCHDLS Series Dumpers

Twin Cylinder High Dump Lift & Seal





TD Series Dumpers



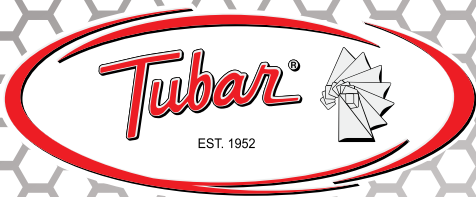
Tubar TD Series Dumpers

The TD series can be custom built to fit the customer's specific requirements. Units are available in standard dumping heights from 36" to 60" with standard load capacities from 750 to 1200 lb and can be designed as stationary, portable or power driven models. Units are equipped with adjustable locking clamps which keep the drums secure.

Tubar TD Series Dumpers are used to feed parts or material where ever it is needed. Units dump into receiving vessels and containers or onto conveyors and other work surfaces.

The TD series can be customized with a multitude of additional options to fit your needs, please check the option page for your added requirements.

The Tubar/Eureka Industrial Group.
American Made. Brickyard Tough.



TD Series Dumpers

Tubar TD Series Dumpers

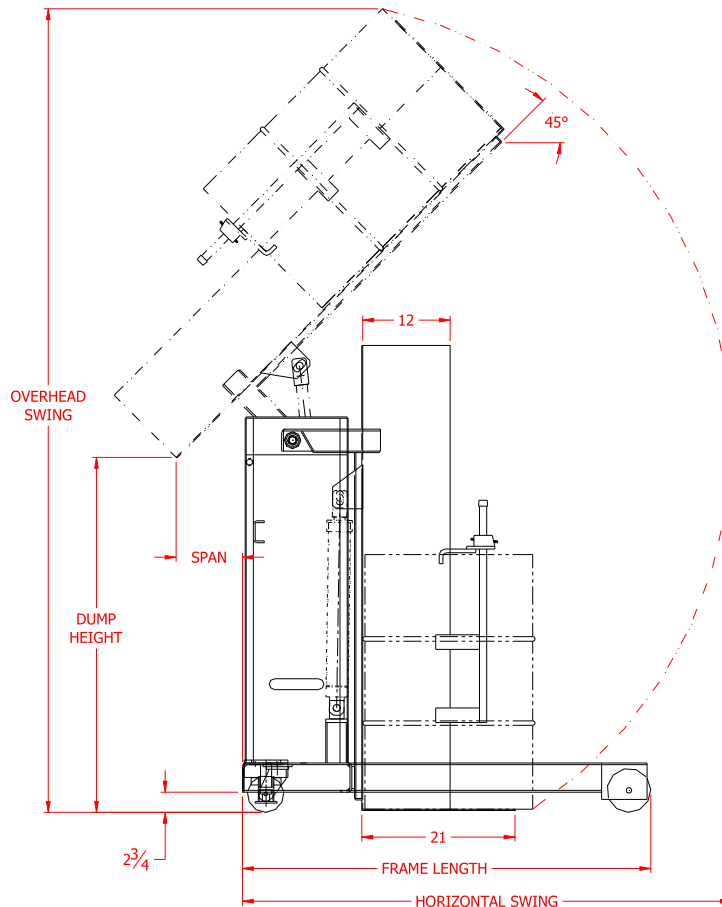
Line power to customer's voltage preference. Includes T.E.N.V. Motor and NEMA Controls
 Battery operated models include 12-volt automotive system with charger. Special motors and controls available.

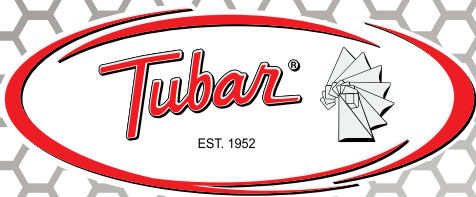
	TD-36"-45°	TD-42"-45°	TD-48"-45°	TD-54"-45°	TD-60"-45°
Dump Height	36"	42"	48"	54"	60"
Frame Length Stat.	49"	44"	49"	54"	60"
Frame Length Port.	56"	51"	56"	61"	67"
Span	10"	9"	9"	9"	9"
Overhead Swing	100"	100"	111"	121"	132"
Horizontal Swing	69"	64"	69"	74"	79"
Chute Height	66.25"	57.75"	63.75"	69.75"	75.75"

Load Capacity 750 lbs. or 1,200 lbs.

Model Number = TD-(dump height)-(dump angle)-(750# or 1200#)-(stationary or portable)

Example: TD-42"-45°-750#-Port





TDLS Series Dumpers

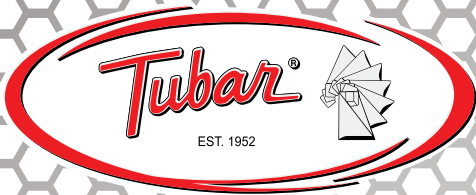


TD Drum Dumper Lift & Seal (TDLS)

The TDLS series can be ordered custom built to fit the customer's specific requirements. Units are available in standard dumping heights up to 60" with standard load capacities from 750 to 1200 lbs with up to 180 degree rotation and can be designed as stationary, portable or power driven models. Tubar TDLS Series Dumpers are used to feed parts or material where ever it is needed. Units dump into receiving vessels and containers or onto conveyors and other work surfaces. This unit is supplied with a moveable carriage that lifts the container into a sheet metal hood, with or without a discharge valve, before dumping. This option is used for dust control and better control of product discharge.

This TDLS series can be customized with a multitude of additional options to fit your needs.

The Tubar/Eureka Industrial Group.
American Made. Brickyard Tough.



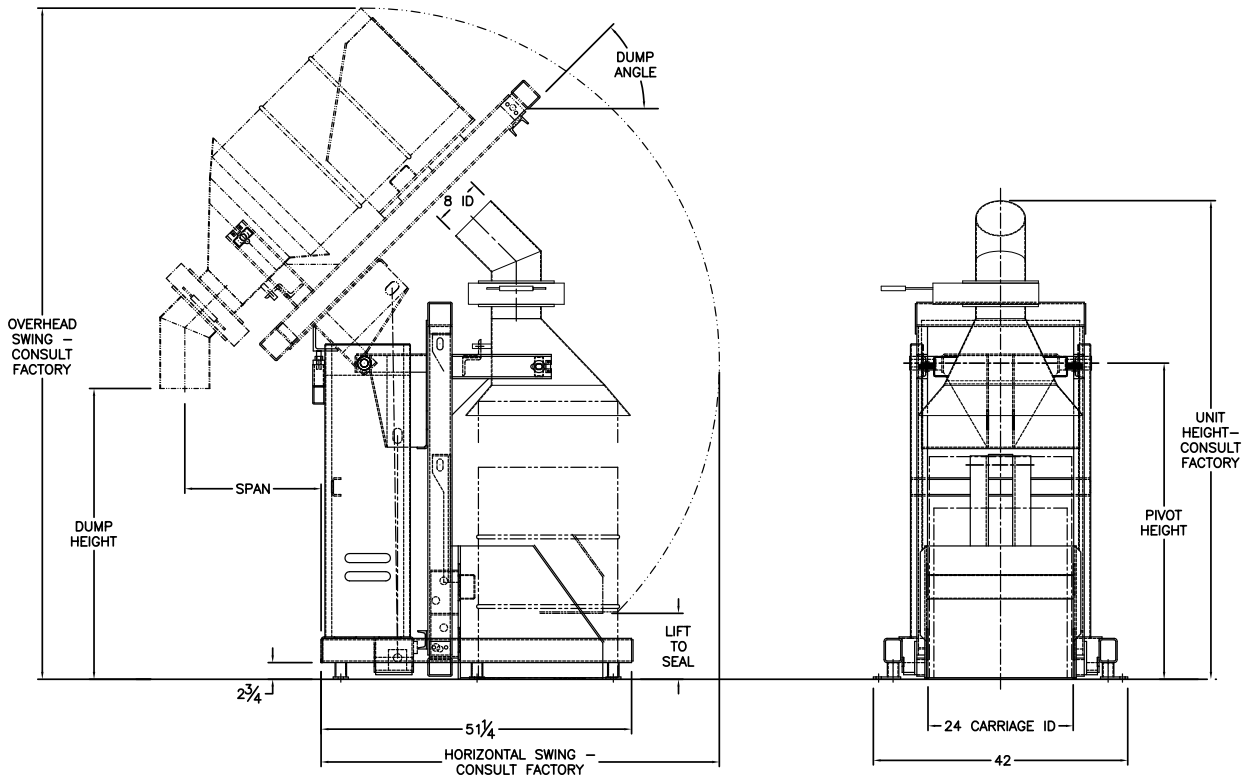
TDLS Series Dumpers

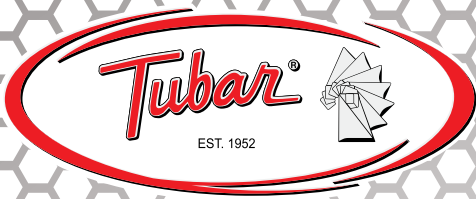
TD Drum Dumper Lift & Seal (TDLS)

Pivot Height	Dump Height	Dump Angle
52.1875"	0-48"	45° - 60°
62.25"	48-66"	45° - 60°

Load Capacity 750 lbs. or 1200 lbs.

Model Number = TDLS-(dump height)-(dump angle)-(750# or 1200#)-(stationary or portable)
 Example: TDLS-42"-45°-750#-STAT





TDHD Series Dumpers

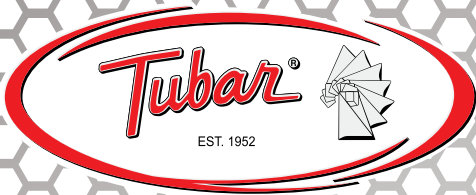
TDHD Drum High Dump

The TDHD series can be ordered custom built to fit the customer's specific requirements. Units are available in dumping heights up to 40 feet with standard load capacities from 750 to 1200 lbs with up to 180 degree rotation and can be designed as stationary, portable or **power driven** models. Tubar TDHD Series Dumpers are used to feed parts or material where ever it is needed. Units dump into receiving vessels and containers or onto conveyors and other work surfaces.

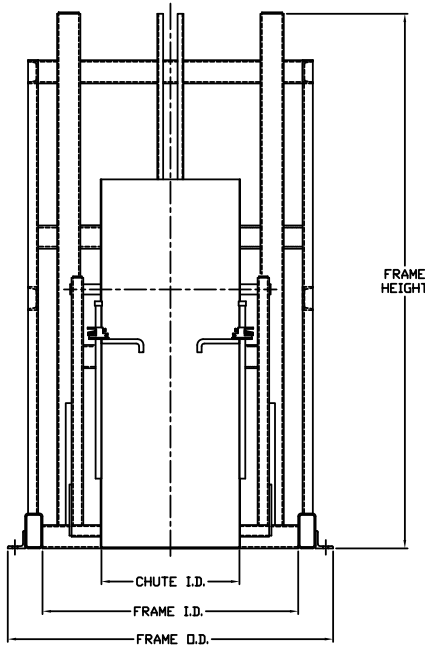
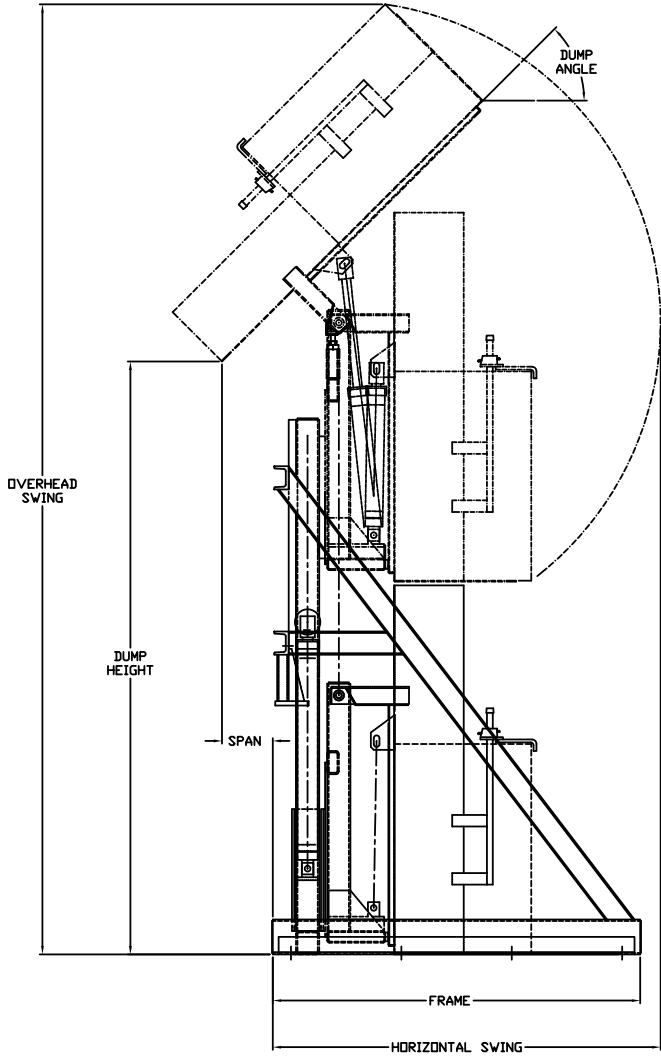
This TDHD series can be customized with a multitude of additional options to fit your needs.

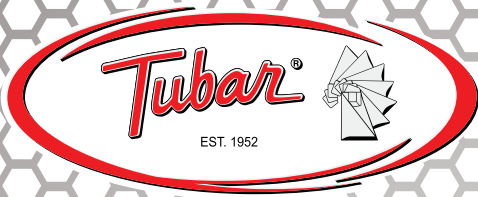


The Tubar/Eureka Industrial Group.
American Made. Brickyard Tough.



TDHD Series Dumpers





TDHDLS Series Dumpers

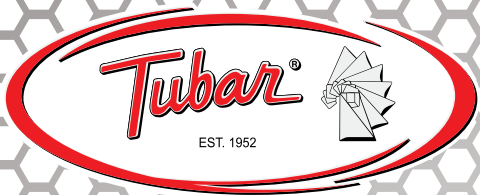
TD Drum High Dump Lift & Seal (TDHDLS)

The TDHDLS series can be ordered custom built to fit the customer's specific requirements. Units are available in standard dumping heights up 40 feet with load capacities from 750 to 1200 lbs and with up to 180 degree rotation and can be designed as stationary, portable or **power driven** models. Tubar TDHDLS Series Dumpers are used to feed parts or material where ever it is needed. Units dump into receiving vessels and containers or onto conveyors and other work surfaces. This unit is supplied with a moveable carriage that lifts the container into a sheet metal hood, with or without a discharge valve, before dumping. This option is used for dust control and better control of product discharge.

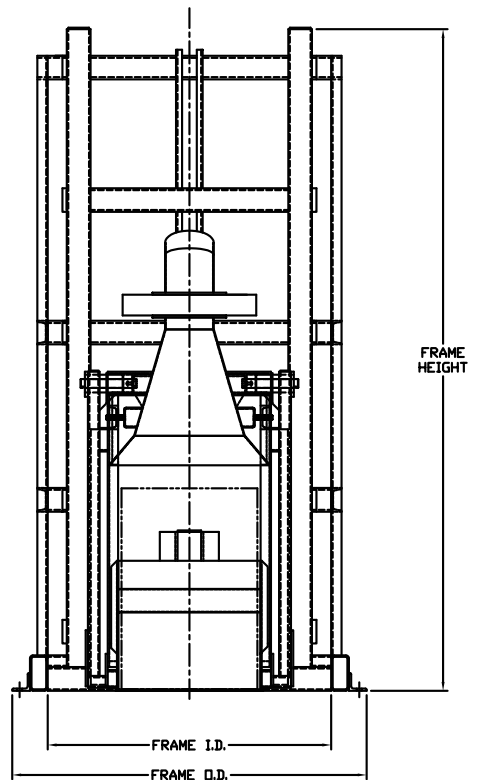
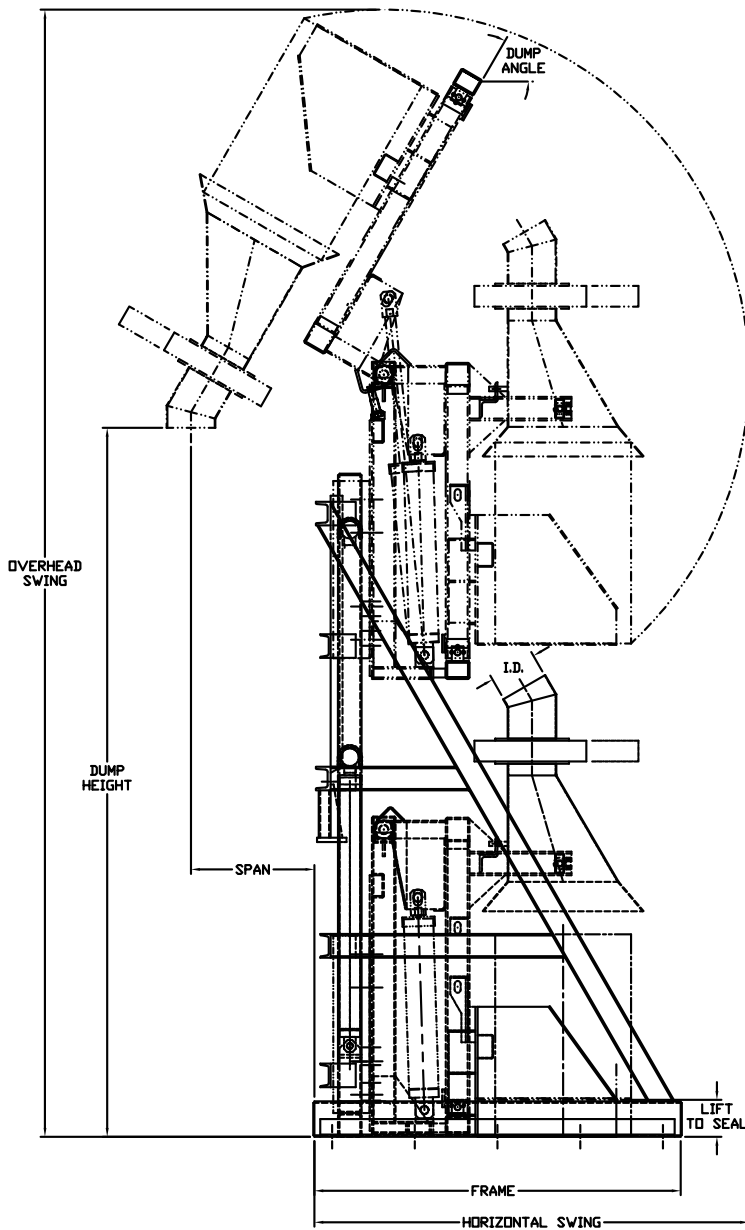
This TDHDLS series can be customized with a multitude of additional options to fit your needs.

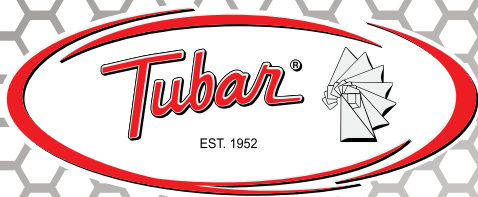


The Tubar/Eureka Industrial Group.
American Made. Brickyard Tough.



TDHDL Series Dumpers





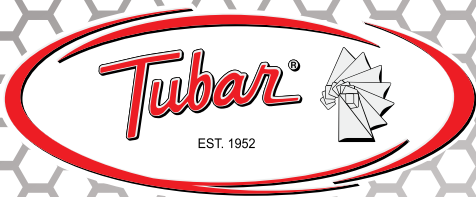
THD Series Dumpers



THD Series

Tubar THD Dumpers can be specifically engineered and constructed to meet your exact needs. Completely hydraulic to provide fast, clean pouring of solids into high vats, bins, hoppers or mills. It raises the drums vertically, then arcs for dumping and pouring. These units are available in portable or stationary models with capacities of 750 lbs and 1,200 lbs. The dump heights are from 72" to 144" and maximum dump angle of 45°.

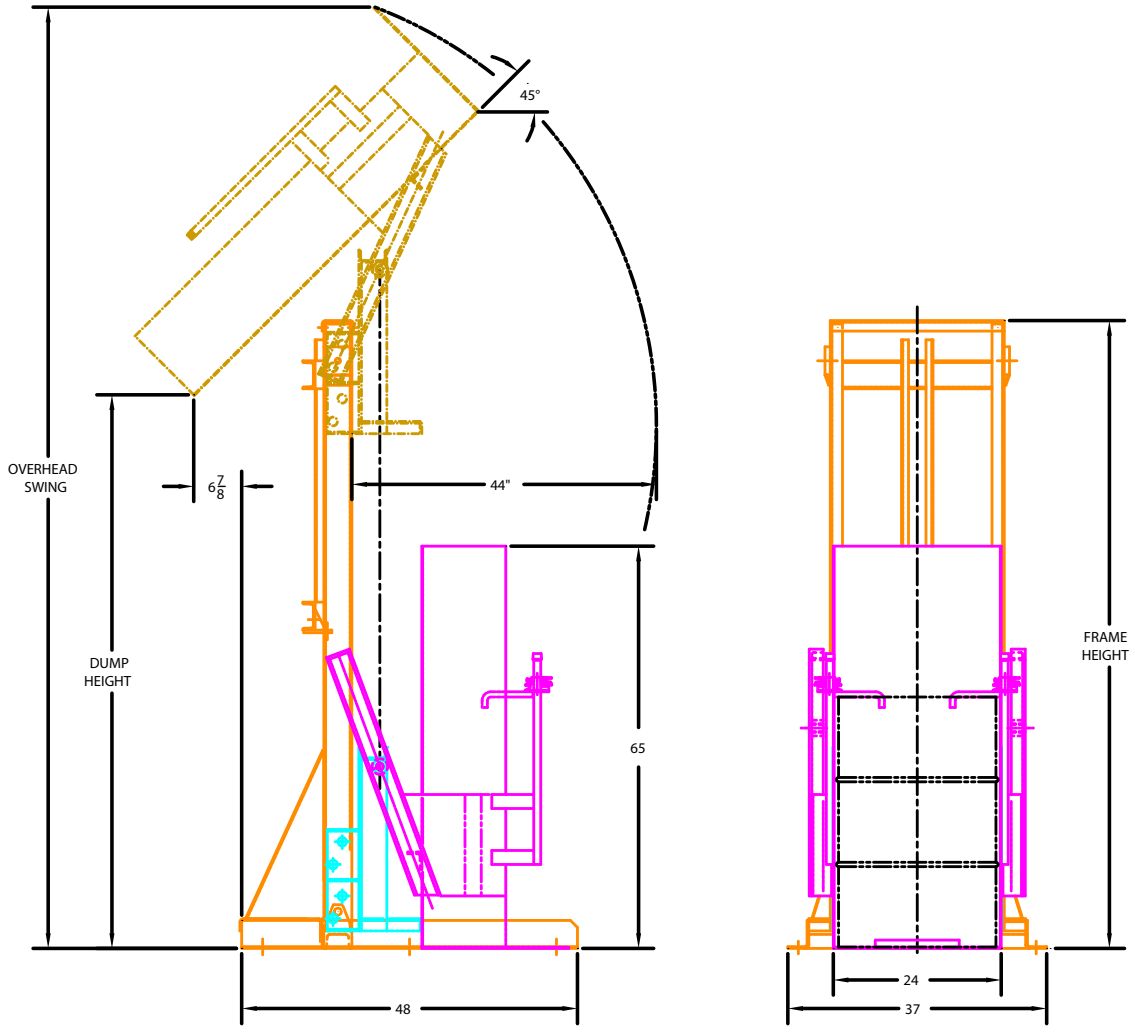
**The Tubar/Eureka Industrial Group.
American Made. Brickyard Tough.**

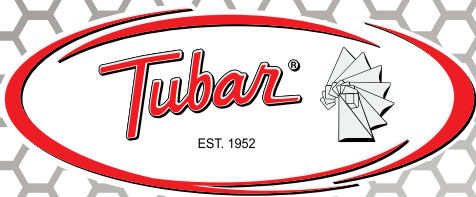


THD Series Dumpers

Model	Dump Height	Overhead Swing	Frame Height
THD-72"-45°	72"	136"	86"
THD-84"-45°	84"	148"	98"
THD-96"-45°	96"	160"	110"
THD-108"-45°	108"	172"	122"
THD-120"-45°	120"	184"	134"
THD-132"-45°	132"	196"	146"
THD-144"-45°	144"	208"	158"

Model Number = THD-(dump height)-(dump angle)-(750# or 1000#)-(stationary or portable)
 Example: THD-72"-45°-750#-Stat





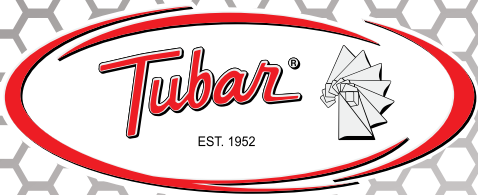
High Dump Slant Mast



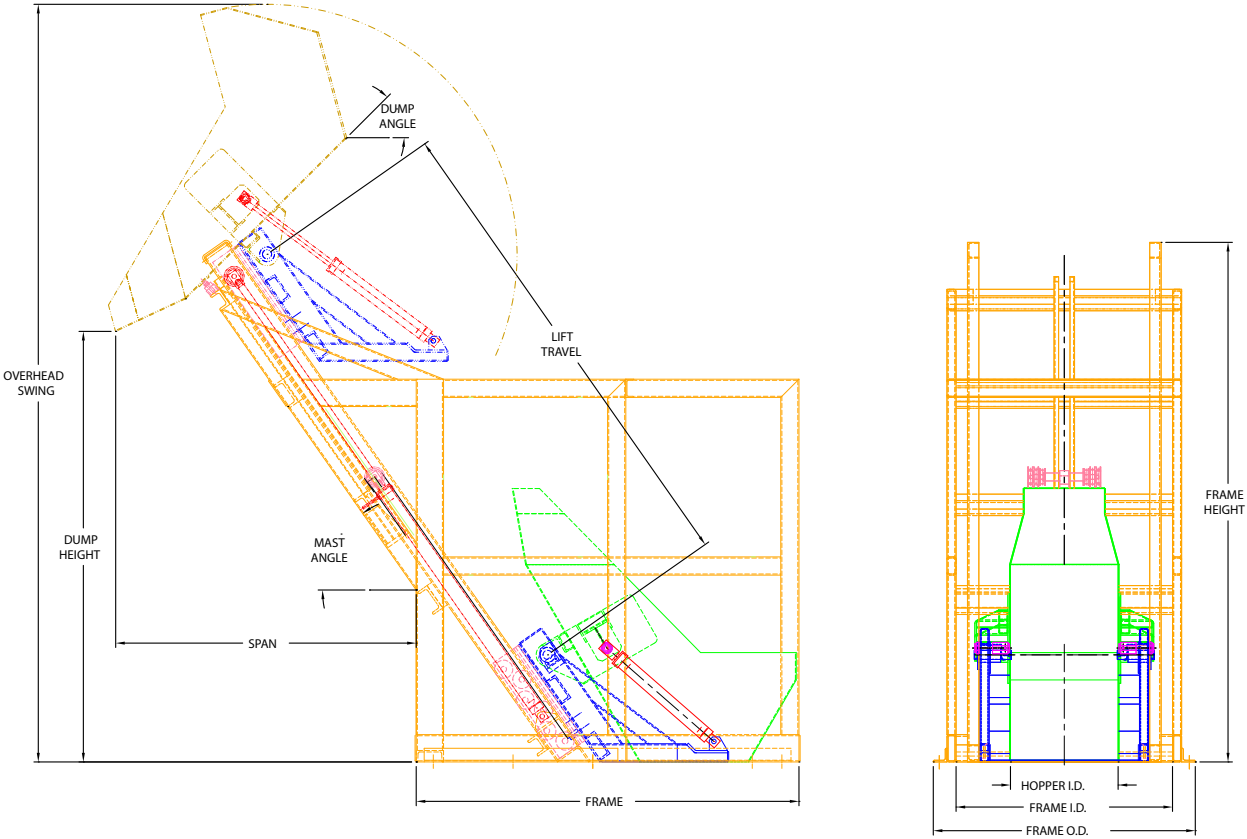
Tubar High Dump Slant Mast Option

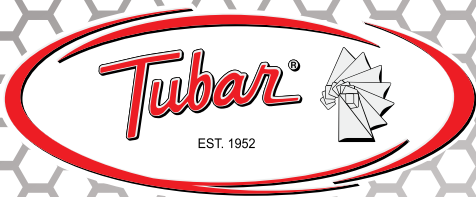
All of Tubar's high dump models are available with the slant mast option. On a slant mast, the mast channels are slanted at an angle instead of being perpendicular to the floor. This option gives the customer the ability to span larger distances between the loading point and the discharge point, thus eliminating additional conveyors or other equipment. Most high dump options are available.

The Tubar/Eureka Industrial Group.
American Made. Brickyard Tough.



High Dump Slant Mast





Food Grade Dumpers



Tubar Food Grade Dumpers

Since 1952, Tubar has built dumping equipment for food processing and packaging plants around the world for meat, vegetables, fruit, snack food and other applications.

Dumpers are designed to minimize product accumulation on structural members by using tubular structural components with capped ends. Special care is taken in design to avoid fasteners that can come loose.

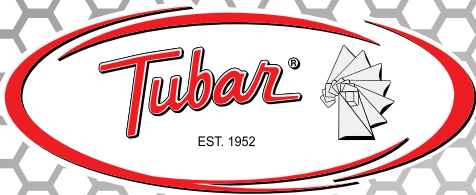
All material used in product contact areas is 304 stainless steel with number 4 finish. Hydraulic cylinder rods are stainless, cylinder tubes are chrome plated inside and flash chrome outside. All welds are continuous. Product contact area welds are continuous and ground smooth if required. Materials which cannot be stainless are painted with USDA approved steel-it paint.

Electrical motors can be washed down motors used for the food industry. All electrical controls are NEMA 4X for corrosion resistance.

All surfaces are thoroughly cleaned. Weld spatters are removed. Extra care is taken in finishing. Dumpers are tested using food approved hydraulic oil. All grease fittings are filled with food approved grease.

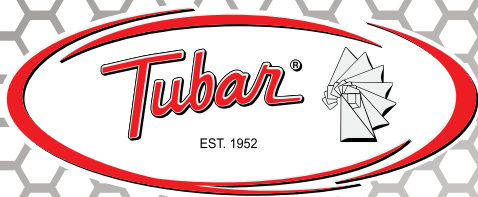
Special care is taken in shipping to prevent any external atmosphere effect.

The Tubar/Eureka Industrial Group.
American Made. Brickyard Tough.



Food Grade Dumpers





Hydraulic Shop Cranes

Dimensions of Standard Models of Tubar Shop Cranes

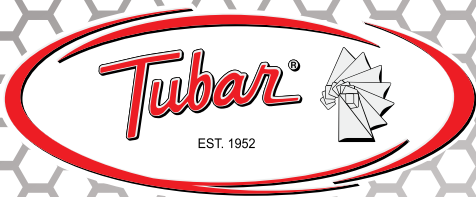
Model	Capacity	Overall Length	Overall Width	Overall Height	Width Inside Legs	Length Inside Legs	Boom Travel
TC-1/2	1000#	4' 4.5"	2' 10"	5' 11"	2' 2"	3' 1"	4' 11"
TC-1	2000#	5' 10.5"	2' 10"	5' 11"	2' 2"	4' 4"	5' 10"
TC-2	4000#	6' 0.5"	2' 11"	6' 10.5"	2' 2"	4' 4"	5' 11"
TC-3	6000#	6' 2.5"	3' 9"	7' 5.5"	2' 10.5"	4' 4"	6' 5"

Model	Boom Heights		Boom Extension		Boom Travel	Crane Weight	Floor Clearance
	Lowest	Highest	Lowest	Highest			
TC-1/2	2' 6"	7' 5"	1' 11"	8' 2"	6' 3"	300#	6.5"
TC-1	3' 2"	9'	2' 1"	10' 3"	8' 2"	415#	8.5"
TC-2	3' 6"	9' 5"	2' 4"	10' 6"	8' 2"	625#	10.5"
TC-3	4' 5.5"	10' 10.5"	3' 3.5"	12' 4"	9' 0.5"	800#	10.5"

Model	Wheel Diameter		Model	Capacity	First Position	Capacity	Second Position
	Load	Swivel					
TC-1/2	6"	5"	TC-1/2	1000#	6"	750#	2"
TC-1	8"	5"	TC-1	2000#	8"	1700#	0"
TC-2	10"	6"	TC-2	4000#	10"	3000#	2"
TC-3	10"	6"	TC-3	6000#	11"	1000#	3"



The Tubar/Eureka Industrial Group.
American Made. Brickyard Tough.



Stackers



Stackers

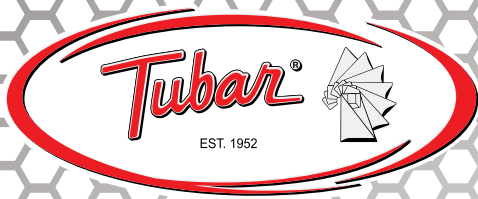
The Tubar/Eureka stackers are the perfect solution for positioning loads vertically anywhere and are suitable for compact work areas. These stackers are high performance units with capacities up to 2000 lbs and heights up to 78 inches. The adjustable load height allows the worker to add or remove parts without bending, thus making loading and unloading easier.

The stackers are hydraulic with a foot operated pump and are available with 12V DC motor and push buttons.

Over the past 50 years these hydraulic stackers are one of the many different hydraulic pieces of equipment that Tubar/Eureka has designed and manufactured to improve safety and productivity for various industries including food.

Stackers are customized and can be designed with custom attachments to fit the customer's specific lifting requirements. All stackers are fully tested prior to shipment.

**The Tubar/Eureka Industrial Group.
American Made. Brickyard Tough.**



Vertical Reciprocating Conveyors

Vertical Reciprocating Conveyors

A VRC is a flat platform lift that can lift the platform to single or multiple levels. These units are for lifting freight, boxes, carts, drums, etc. Platform size is based per customer's specifications. They are for freight only and not for personnel.

Some options are as follows:

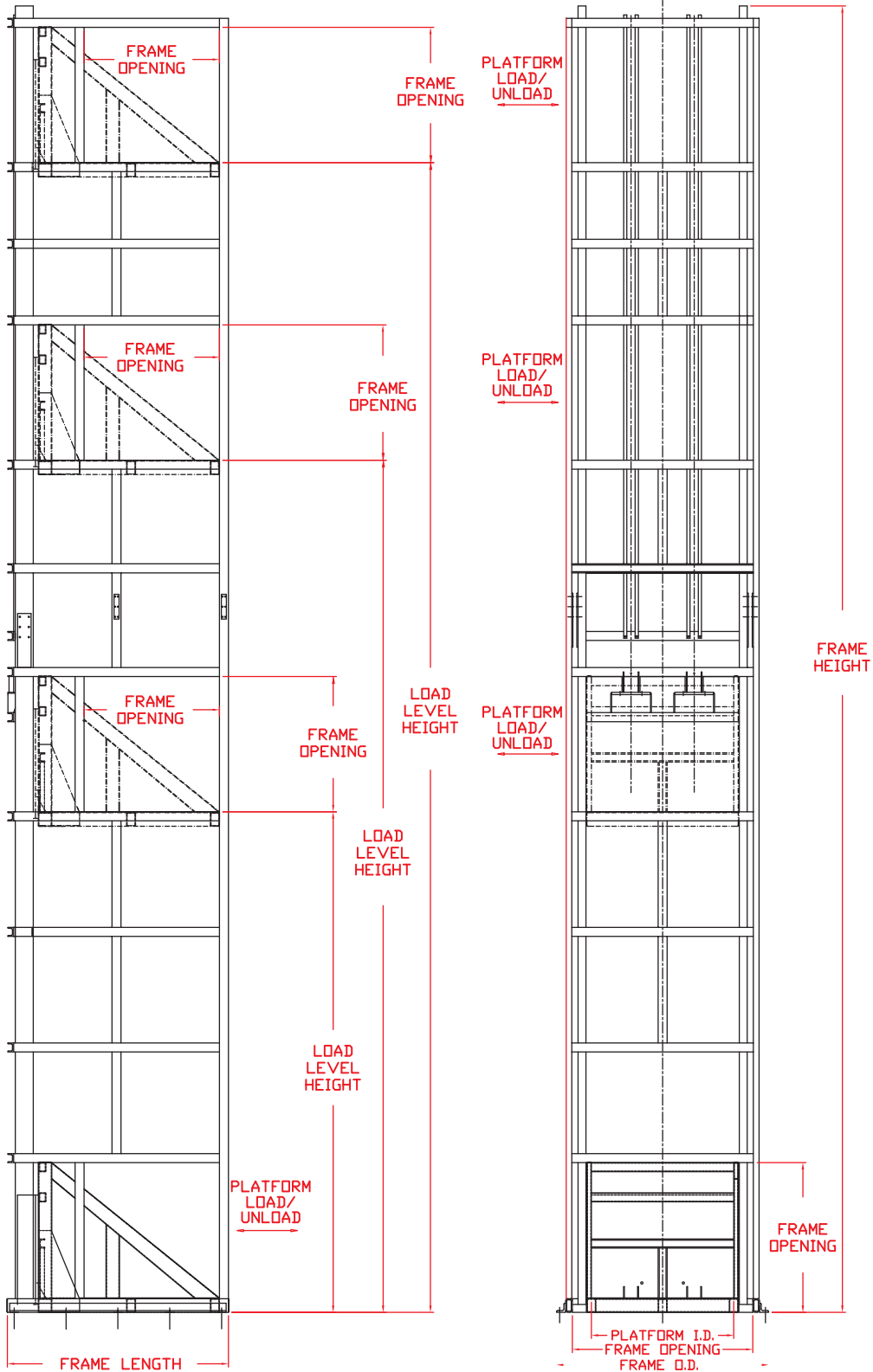
- Safety enclosures
- Numerous electrical and hydraulic power unit options
- Numerous loading level options
- Stationary and portable units
- Capacities up to 12,000 lbs
- Unloading heights up to 40 feet
- Different finishes and materials
- Food grade/wash down options

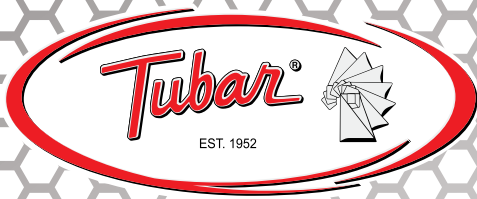


The Tubar/Eureka Industrial Group.
American Made. Brickyard Tough.



Vertical Reciprocating Conveyors





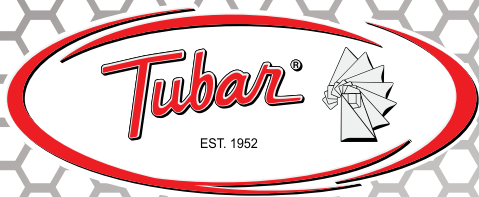
Bulk Bag Systems

Tubar Bulk Bag System Solutions

Tubar has developed a Standard Bulk Bag System designed to meet the growing need of Powder Bulk Material Handling. Just like the rest of the Tubar product line, these units are Built Brickyard Tough and made to last. Using 4" square tubing with 1/4" wall the main structural frame is built for strength and durability. The assembled Tubar Bulk Bag Unloading System is designed to quickly and completely discharge the contents of a bulk bag in a safe and dust free manner.

Tubar offers three unloading system types and a universal filling station. These systems come with plenty of options to keep your production moving and can be custom fabricated to meet your specific requirements for those unique projects. All units are built with carbon steel with options of stainless.

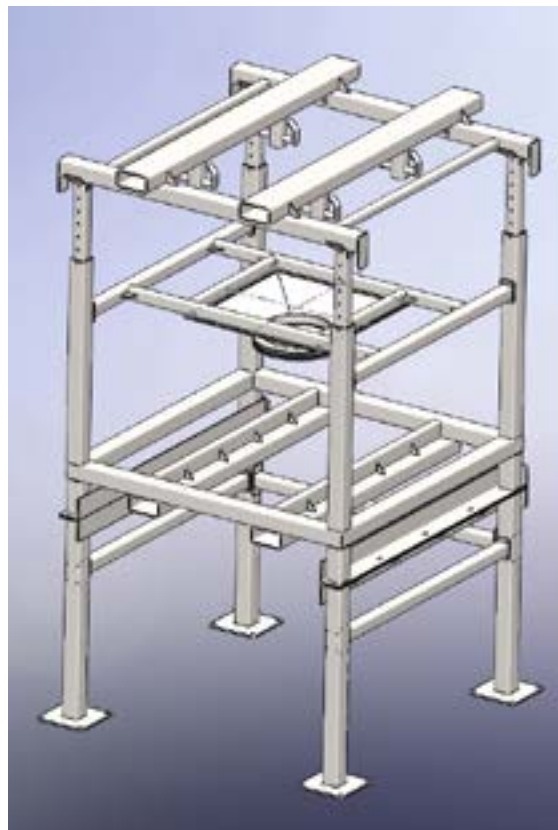


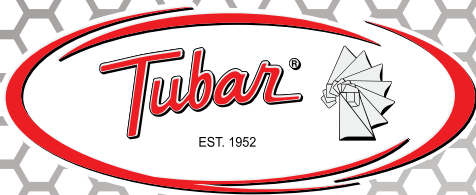


Low-Profile Bulk Bag Unloader (TBU-100)

The Tubar Low-Profile Unit uses a shorter lower structure to accommodate those projects with ceiling restrictions. The unit operates much like the Fork Lift loaded unit with adjustable arms up to 12' tall. The upper structure is built with upper and lower fork pockets to ensure bulk bag can be loaded in restricted ceiling situations. The upper structure also has a detachable Bag Carriage Frame that can easily be set on the adjustable arms. The Bag Carriage Frame also has four bag hanging hooks. Each unit can be designed and fabricated to meet each customer's unique height requirements and comes standard with the Lower Massager Paddles and Dust Containment Box. Inside the Dust Containment Box is a Bag Clamp to securely lock the bag into place and to help limit dust contamination along with a Lever Operated Iris Valve that allows you to meter material flow or close off bag completely for tie-off and bag removal.

Standard Control Voltage: 115/110V-1PH-60/50 Hz

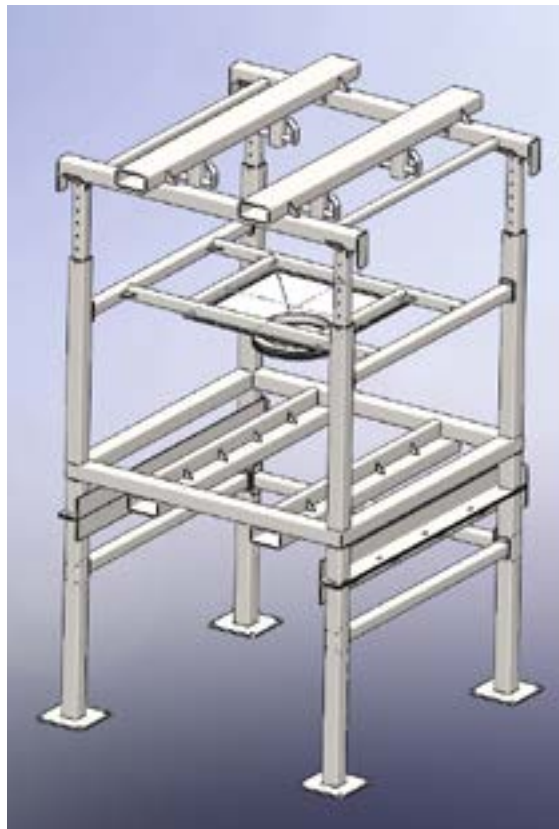


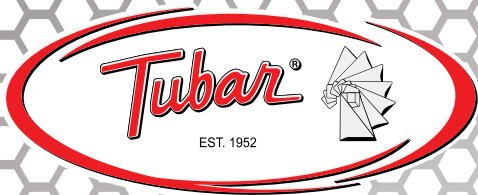


Fork Lift Loaded Bulk Bag Unloader (TBU-250)

The Tubar Fork Lift Loaded Unit uses the same base structure as the Hoist and Trolley Unit. The Fork Lift Loaded Units have adjustable arms in the top structure for custom height depending on bag sizes. The unit uses the Bag Carriage Frame that can be picked up with a fork lift and set securely on top of the arms that are adjusted to the desired height. This unit comes standard with the Lower Bag Massaging Paddles that are mounted in the bag support structure to help with material flow, maximize material discharge from corners of bag and to help channel material flow. A Lever Operated Iris Valve also comes standard that allows you to meter material flow or closes off bag completely for tie-off or bag removal. Also coming standard with this unit is a Dust Containment Box. Inside the Dust Containment Box is a Bag Clamp to securely lock the bag into place & to help limit dust contamination.

Standard Control Voltage: 115/110V-1PH-60/50 Hz





Hoist and Trolley Bulk Bag Unloader (TBU-500)

The Hoist & Trolley structural framework is custom designed and fabricated to meet your specific requirements for your application. The unit includes a cantilevered I-Beam for the electric chain hoist and trolley to load and unload the bulk bag without the use of a fork lift. Coming standard with this unit are the Lower Bag Massaging Paddles that are mounted in bag support structure to help with material flow, maximize material discharge from the corners of bag and to help channel material flow. A Lever Operated Iris Valve comes with this unit that allows you to meter material flow or close off bag completely for tie-off and bag removal. Also coming standard with this unit is a Dust Containment Box. Inside the Dust Containment Box is a Bag Clamp to securely lock the bag into place & to help limit dust contamination.

The unit comes standard with a 4,000-pound capacity Electric Chain Hoist and Power Trolley.

Standard Control Voltage: 115/110V-1PH-60/50 Hz

Standard Supply Voltage: 220/440/3/60 (Hoist and Power Trolley)





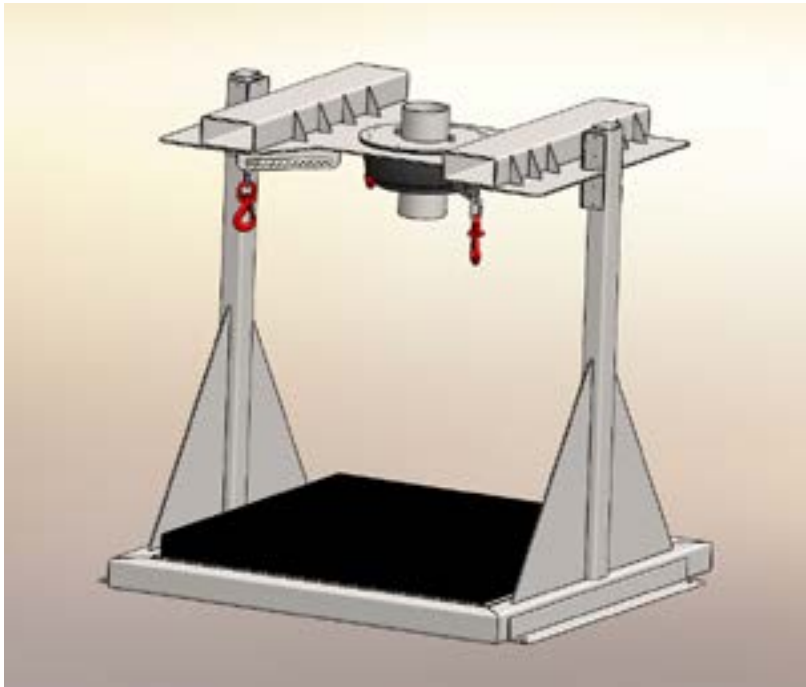
Tubar Bulk Bag Filling Station (TFS-100)

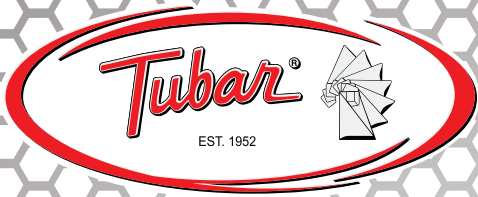
The Tubar Bulk Bag Filling Station frame is built to maximize strength and has easy access to adjustable bag hanging hooks. This unit is designed to satisfy low capacity filling requirements, but can be upgraded to meet higher capacity needs. The Tubar Filling Station comes standard with load cells with overload protection to meet specific weight requirements. This unit can be a stand-alone filling station or be part of a Material Handling System Solution including material delivery options and gravity or power roller conveying options. The standard size of the Tubar Filling Station is 48" x 48" ID but along with the rest of the Tubar family this unit is also customizable in size to meet your specific needs.

The side arms and upper frame are designed to extend and retract to desired height according to the Bulk Bag Size and easily lock into place. The upper frame includes a customizable bolt on spout with a standard air bladder to maximize bag seal and inflate bag prior to filling.

Standard Control Voltage: 115/110V-1PH-60/50 Hz

*Please see page 37 for additional options.

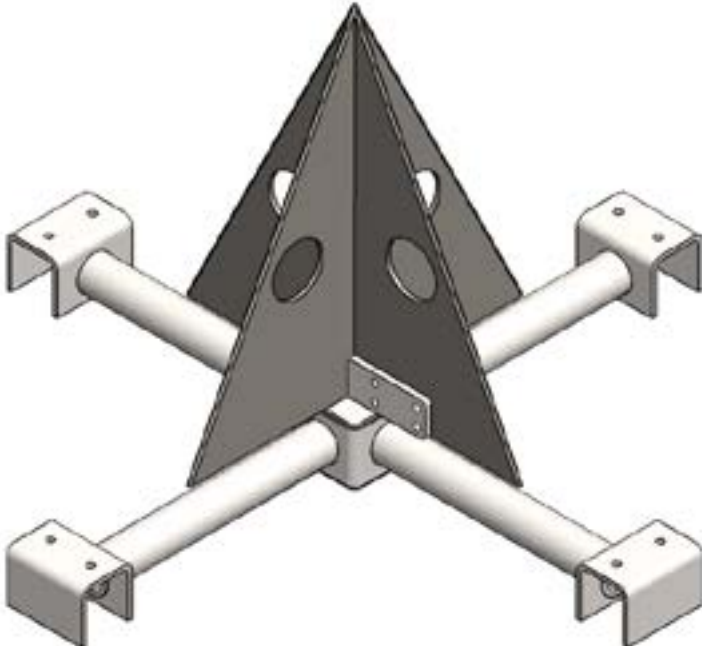


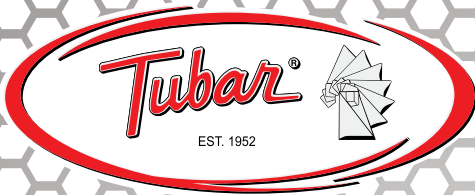


Tubar Arrowhead Bag Splitter (TAS-100)

The Tubar Arrowhead Bag Splitter is designed for those flat bottom Bulk Bags that can be a pain and often unsafe to unload the material. Designed to be custom fabricated to fit any hopper size. The cross-arm mounting design will provide additional strength and stability to the Arrowhead Spike. This is easily bolted into place.

The Arrowhead Spike is constructed of mild steel, sharpened edges and then heat treated for additional strength, durability, and longevity. The Arrowhead Spike design makes easy removal of spike for replacement spikes or sharpening.





Bulk Bag Systems

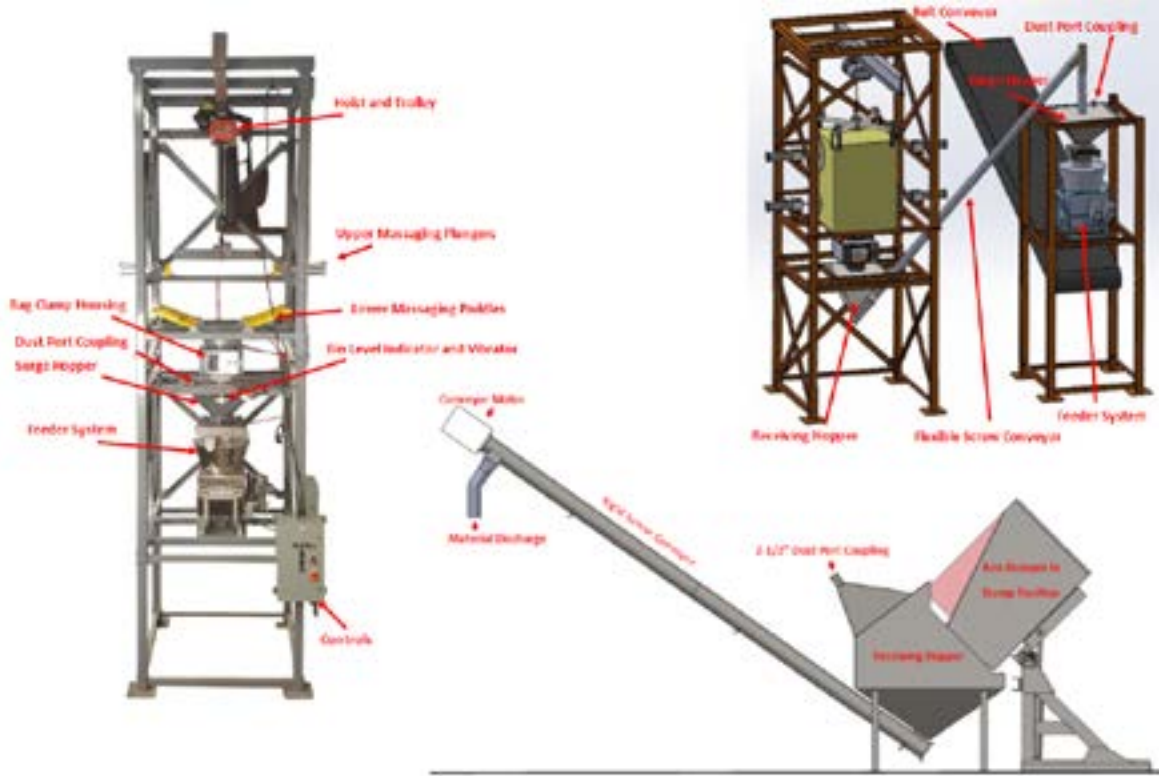
Tubar Material Handling System Solutions

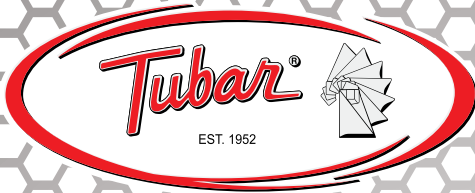
Here at Tubar Eureka, we specialize in creating custom fabricated Material Handling System Solutions to meet the constantly changing needs of the Material Handling industry. Whether you need a Dumper, Conveying System, Bulk Bag Unloaders, Filling Stations or any combination of equipment, Tubar Eureka can provide a System Solution to meet your needs. Our goal is to not only meet your expectations, but to exceed them.

We have the expertise, experience and the partnerships to provide a Complete Material Handling System Solution from initial planning and design to installation along with customer support beyond the installation and on-site technical assistance. Our services include but not limited to: Project Design and Engineering, Control Systems, Equipment and Complete Material Handling System Solutions for distribution, manufacturing, assembly and industries including food, chemical, pharmaceuticals, government contracts, handling raw material for the brick industry and many other industry applications.

Contact us today to discuss with our team your specific needs and requirements. You get to work closely with our team to design a Material Handling System that works for you.

*Please see page 37 for additional options.





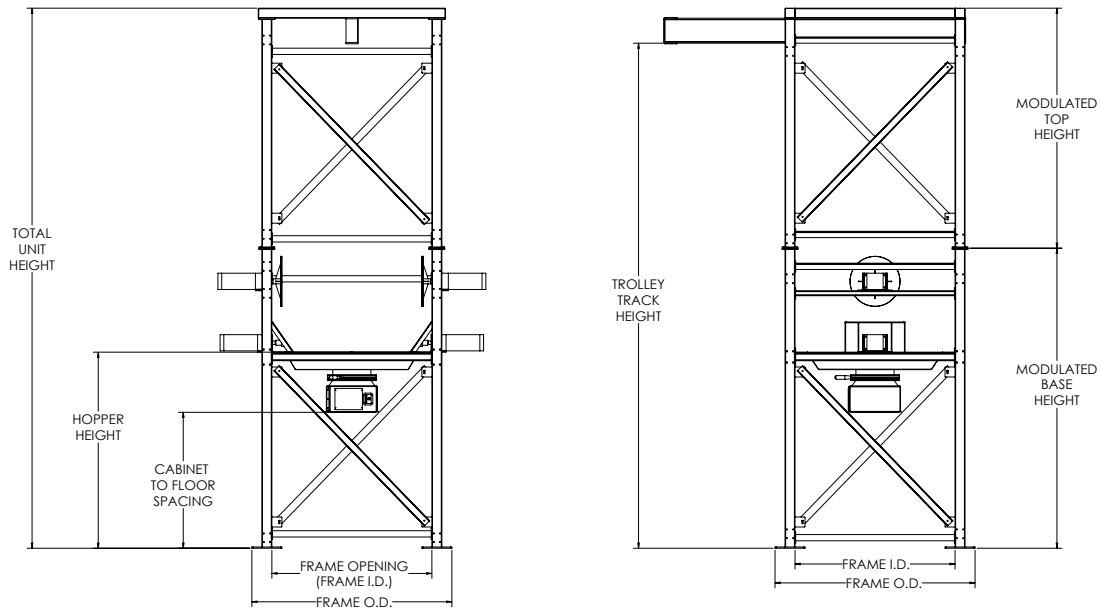
Bulk Bag Systems

- Standard 2000 and 4000 lb capacity
- Air operated bag de-lumper options.
- Custom design available
- Height can be customized
- Modulated for easy installation and transportation
- Stainless Steel options available



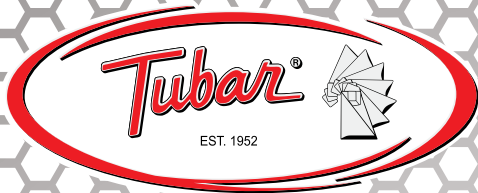
The Tubar bulk bag unloading system.

The Tubar bulk bag system uses a valve system that closes into a tight circle for metering material flow and to close the bag for removal.



The Tubar/Eureka Industrial Group.
American Made. Brickyard Tough.





Tubar Bulk Bag and Material Handling Systems Options

SYSTEM TYPE:

- Low Profile Bulk Bag Unloader (TBU-100)
- Fork Lift Loaded Bulk Bag Unloader (TBU-250)
- Hoist and Trolley Bulk Bag Unloader (TBU-500)
- Bulk Bag Filling Station (TFS-100)
- Bulk Bag Pre-Conditioner (TPC-100)
- Material Handling System Solutions

OPTIONS:

- Upper Massager
- Lower Massager Paddles
- Hoist and Trolley
 - Manual
 - Electric
 - 2,000 Pound Capacity
 - 4,000 Pound Capacity
- Surge Hopper with Inlet (Sized to specific requirements)
 - Bin Level Indicator
 - High
 - Low
 - Vibrator
 - Fluidizer
 - Lid with Dust Port Coupling
- Iris Valve
- Slide Gates
 - Manual
 - Pneumatic
- Dust Containment Box with Bag Clamp
 - Dust Port Coupling
- Conveying
 - Roller
 - Gravity Roller
 - Power Roller
 - Belt
 - Transfer
 - Screw Augers
 - Rigid
 - Flexible
- Feeders
- Base for TFS-100 Tubar Filling Station
 - Vibrating
- Controls
- Illusion Software
- Tubar Arrow Head Bag Splitter (TAS-100)
- Mild Steel
- Stainless Steel



Custom Equipment



Custom Equipment

For a combined 175 years, The Tubar/Eureka Industrial Group has been a SOLUTIONS provider by designing and manufacturing custom equipment that meets and exceeds our customer's expectations.

We can handle capacities as light as 50 lbs to as heavy as 12,000 lbs, dump as low as 4" to as high as 40 ft, and can dump your product at any angle above horizontal including a complete 180 degree inversion. We can design our units to be stationary, portable or hydraulic power driven. Our equipment can be used in a standard industrial atmosphere or wet and corrosive atmospheres. We use your specific containers and products in our design, manufacturing and testing.

- Dumpers
- Stackers
- Shop floor cranes
- Robot attachments
- Marshaling equipment
- Large chain assemblies
- Food process equipment
- Brick process equipment
- Custom fabrication
- Custom design services

Please contact our sales department today to find a solution to your material handling problems.

The Tubar/Eureka Industrial Group.
American Made. Brickyard Tough.



Custom Equipment





Hydraulic Power Units

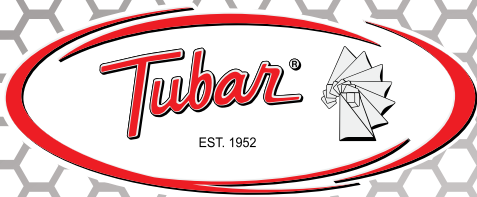


Hydraulic Power Units

Our hydraulic power units are built to meet the daily needs of the toughest and most demanding applications. They are used in food, chemical, automobile and wash down applications and are designed to meet your requirements and built to your specifications. Our quality products are manufactured in a timely manner and we support our product with excellent customer service. These hydraulic power units have been used for custom built dumpers, vertical reciprocating conveyors, lifts and compactors for over 50 years. All power units are tested before shipped.

- Welded standard and JIC (Joint Industrial Council) type
- Fully assembled and self contained
- TENV or TEFC including wash down motor with 110/1/60 and 220/440/3/60 voltage. (Other voltages available)
- Gear or Vane type pumps
- Check and relief valve
- Manifold with up to 4 stations
- 4 way 3 position directional control valves
- Sandwich type counter balance valve
- Glycerine filled pressure gauge to monitor hydraulic system pressure
- Pressure switch with digital read out
- Suction line strainer
- Baffle plate in larger oil reservoirs
- Reservoir capacity from 2 gallons to 60 gallons. Reservoirs have drain plug, breather and fill cap and oil level gauge. Larger reservoirs have oil gauge with temperature indicator
- Motors with ¾ hp to 25 hp
- Pumps from 1.4 gpm to 20 gpm
- Hydraulic pressure 2000 psi max
- Adjustable relief up to 1750 psi
- These power units can be furnished with electrical controls for NEMA 4, 4X and 12 classification

The Tubar/Eureka Industrial Group.
American Made. Brickyard Tough.



Hydraulic Cylinders



Hydraulic Cylinders

Tubar has built hydraulic cylinders for over 50 years. They are built to meet daily needs of the toughest and most demanding applications. These hydraulic cylinders are used in food, chemical, automobile and wash down applications and are designed to meet your requirements and built to your specifications. We manufacture quality products in a timely manner and support our product with excellent customer service. These cylinders have been used for custom built dumpers, cranes, stackers, vertical reciprocating conveyors, lifts and compactors. All cylinders are fully tested before shipment.

- Welded construction type
- Fixed clevis base
- Ductile iron piston and cap
- External safety cap to prevent blow out of cylinder cap snap ring in case of excessive hydraulic pressure
- Honed precision 16 RMS finished tube
- Hard chrome and high tensile strength rod
- Polypak seals and buna o-rings in piston and cap
- Oillite bronze bushing for maximum wear life in rod end
- Hard chrome base and rod end pins
- Bore size from 2 inches to 6 inches
- Rod size from 1 ¼ inch to 4 inches
- Stroke up to 21 feet
- Painted red unless otherwise specified
- Can be furnished with chrome plated i.d. and flash chrome o.d.
- Stainless steel rod or complete stainless steel construction available
- Velocity check valve in base of cylinder
- Can be furnished with dual ports in base of single acting vertical lift cylinder for quick descent

The Tubar/Eureka Industrial Group.
American Made. Brickyard Tough.



WARRANTY

Warranty

Tubar warrants such subassemblies, components and parts incorporated in and accessories for the TUBAR DUMPER (herein after collectively called “the products”), to be free from defects in material and workmanship; provided, however, that Tubar’s obligation under this warranty shall be limited to the repair or replacement, at such of its manufacturing plants as shall be designated by Tubar, of any products which shall prove to be defective within 12 months from date of shipment, and further provided that prompt written notice of such defect shall be given by the buyer to Tubar and upon request by Tubar the defective product shall be returned to Tubar at its said manufacturing plant or to such other point as Tubar may designate, freight pre-paid, for inspection.

Unless otherwise agreed to in writing by Tubar, the Purchaser shall bear the expense of installation.

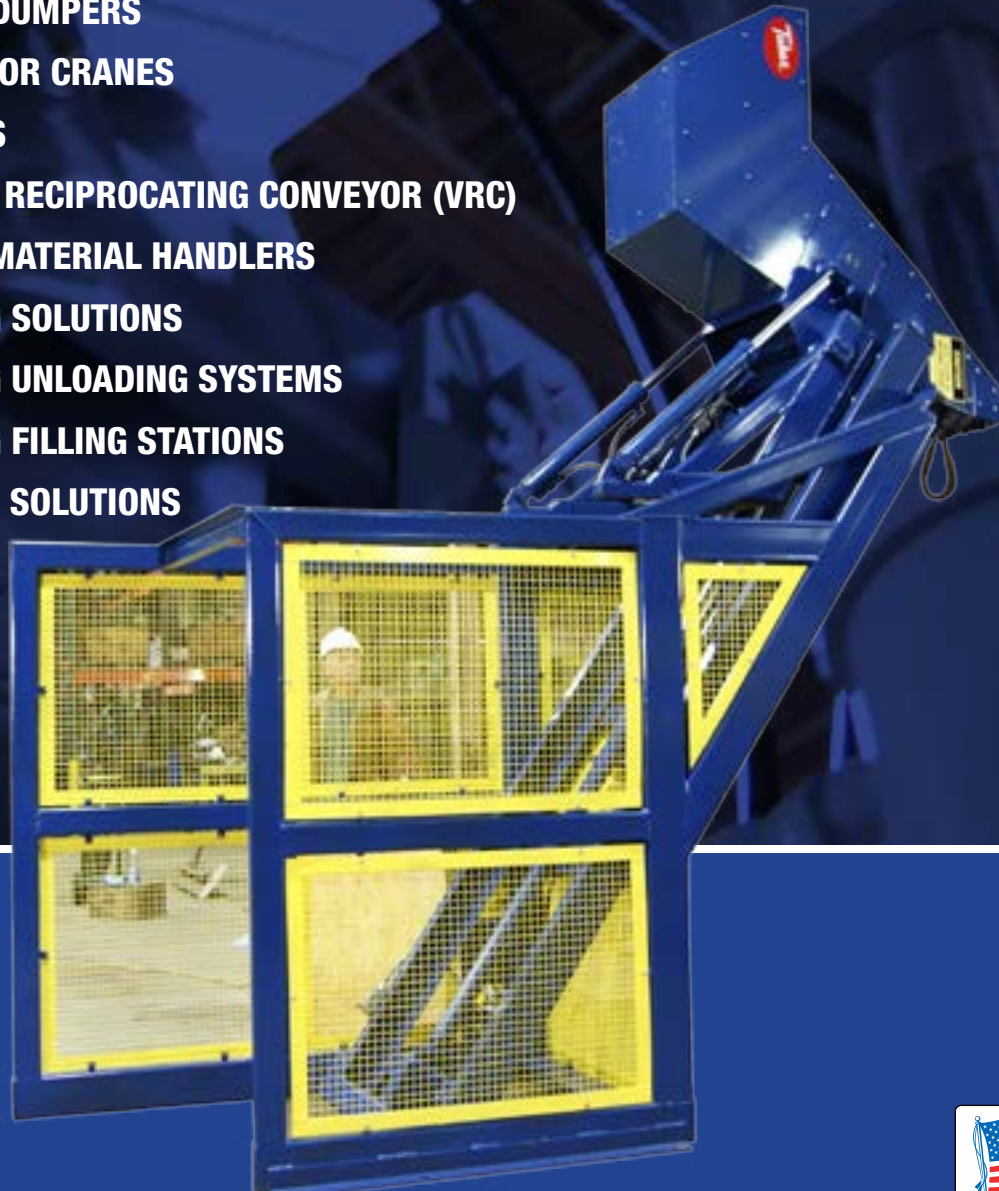
This warranty applies only to new and unused products which after shipment from Tubar’s manufacturing plant have not been altered or repaired in any manner whatsoever. This warranty does not apply to any product which has been damaged by over-loading or other misuse, neglect or accident. Tubar shall have no liability for general or special damages or for negligence, and there is no warranty of fitness for a particular purpose.

Any products not manufactured by Tubar are subject to the warranties of their respective manufacturers and Tubar agrees to assist the buyer in the handling of warranty claims to such manufacturers. In considerations of the foregoing warranty, all statutory and implied warranties are of no effect.

The Tubar/Eureka Industrial Group.
American Made. Brickyard Tough.



- ◆ **BOX DUMPERS**
- ◆ **DRUM DUMPERS**
- ◆ **MANUAL DUMPERS**
- ◆ **SHOP FLOOR CRANES**
- ◆ **STACKERS**
- ◆ **VERTICAL RECIPROCATING CONVEYOR (VRC)**
- ◆ **CUSTOM MATERIAL HANDLERS**
- ◆ **BULK BAG SOLUTIONS**
- ◆ **BULK BAG UNLOADING SYSTEMS**
- ◆ **BULK BAG FILLING STATIONS**
- ◆ **TURN KEY SOLUTIONS**



ISO9001
CERTIFIED

